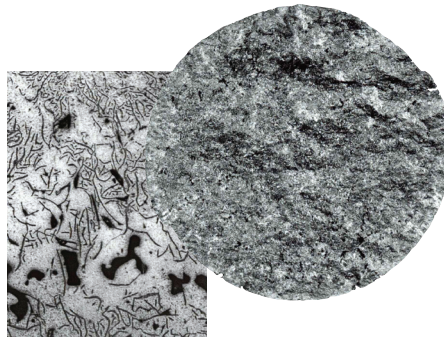




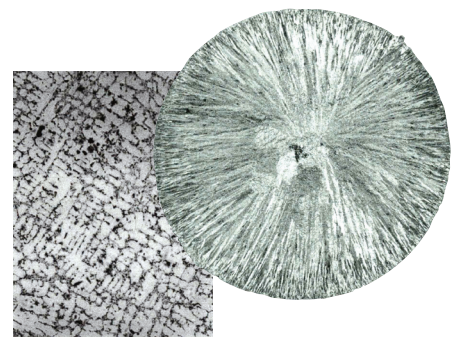
Metallurgy & Microstructure

Chill Cast Microstructure

Anotec's proprietary process assures consistent weight, greater density, less flake graphite grain boundary, and lower chemical segregation.



Competitor Sand Cast

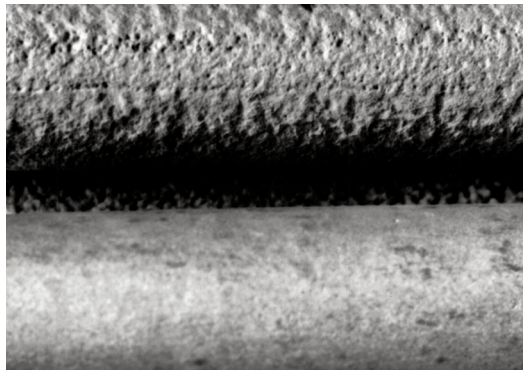


Anotec Chill Cast

Corrosion Resistance

The corrosion resistance of high silicon cast iron is attributed to the development of a thin passive barrier film of hydrated silicon dioxide on the metal surface. This film develops with time due to the dissolution of iron from the metal matrix leaving behind silicon which hydrates due to the presence of moisture.

Due to the fine grain size with spheroidal graphite and more uniform composition, chill cast high silicon cast iron has better corrosion resistance than a sand cast high silicon cast iron.



Competitor Sand Cast

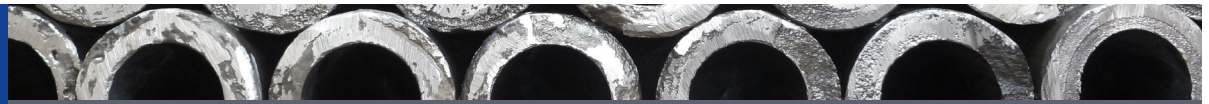
Anotec Chill Cast

**Anotec
Industries Ltd.**

5701 Production Way
Langley, BC, Canada

604.514.1544

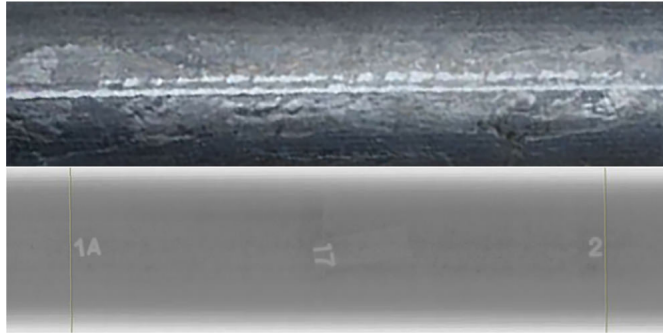
info@anotec.com



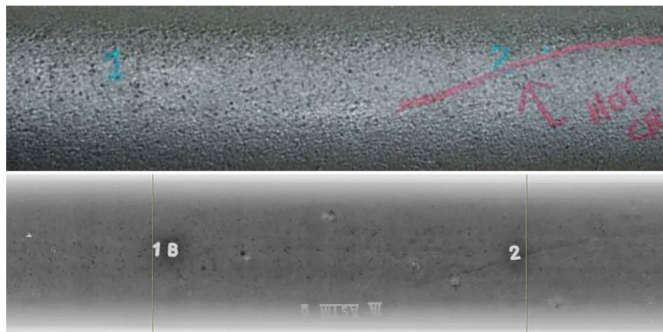
Porosity & Inclusions

Anotec's method of chill casting in a static mold yields tubular anodes that are superior in every way to centrifugal-cast tubular anodes.

On the inside, it becomes clear to see (using radiography) . Significantly less gas porosity and no slag inclusions.

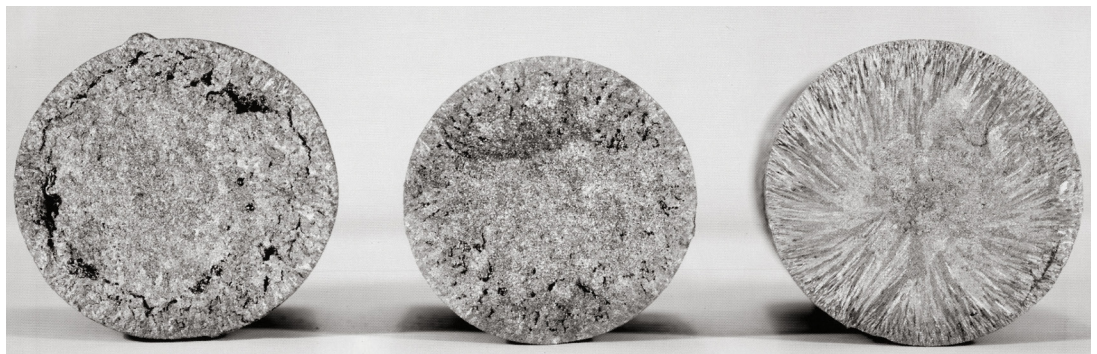


Anotec Static Cast



Competitor Centrifugal Cast

Only One is an Anotec Anode



Certified to
NSF/ANSI CAN 61-G



ISO 9001
OMF-SAI Global

MANUFACTURED IN CANADA